



# SEB Installation on Windows

*This is not the assessment link. Please check your email with the link to attempt the assessment after installing SEB. Please **follow the instructions** carefully to install the Safe Exam Browser correctly.*

## Recommended System Requirements for Windows

Processor	i3 2.2GHz / AMD A6 1.8Ghz or above
Operating System	Only Windows 10 and 11
Memory	8 GB or above
Display	14" Screen with 1920 x 1080 or above
Battery Life	4 hours under normal use

### Prerequisites for Installing Safe Exam Browser (SEB)

- Windows operating system should be up to date.
- Your hard drive should have at least 8GB of free disk space.
- Please ensure that you have a stable and strong internet connection.
- The system should have a working web camera and microphone, and the battery should be charged enough to last the test.

This user manual is proprietary and confidential, intended only for authorized users of Pod.ai.

Unauthorized use, copying, or sharing is strictly prohibited. The manual must remain within designated systems and may not be shared externally. By accessing it, you agree to comply with all confidentiality terms. Violations may lead to disciplinary or legal action.

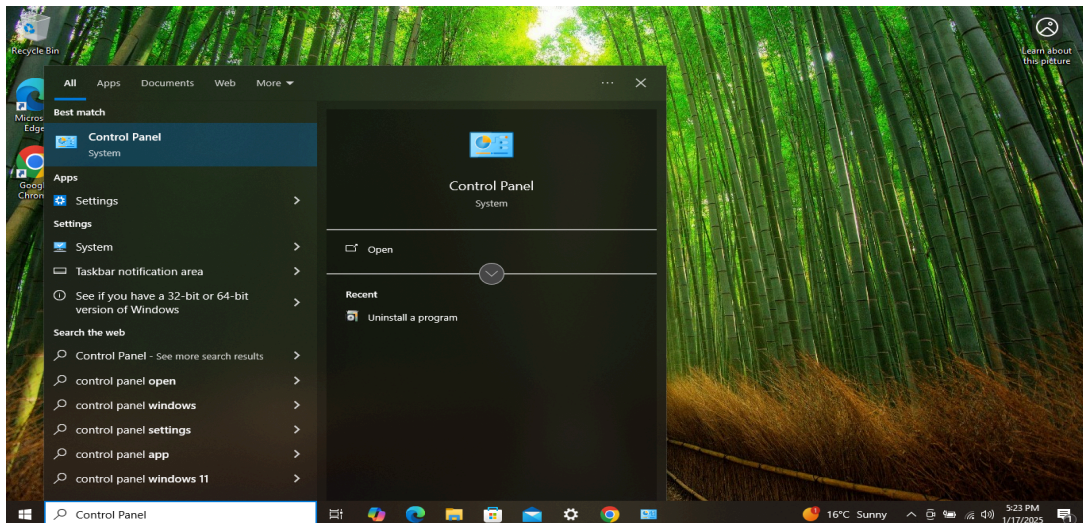


- You should have Admin Rights for the system.
- No Network/System Restrictions should be present.
- Please check the list of supported antivirus software. Any other antivirus should be disabled.
- Please make sure that no other applications are running on your system.
- Do not turn off, put your system to sleep, or accidentally close it during installation or while taking the assessment, as it may cause disruptions or lead to the assessment getting suspended.

## Check SEB Version

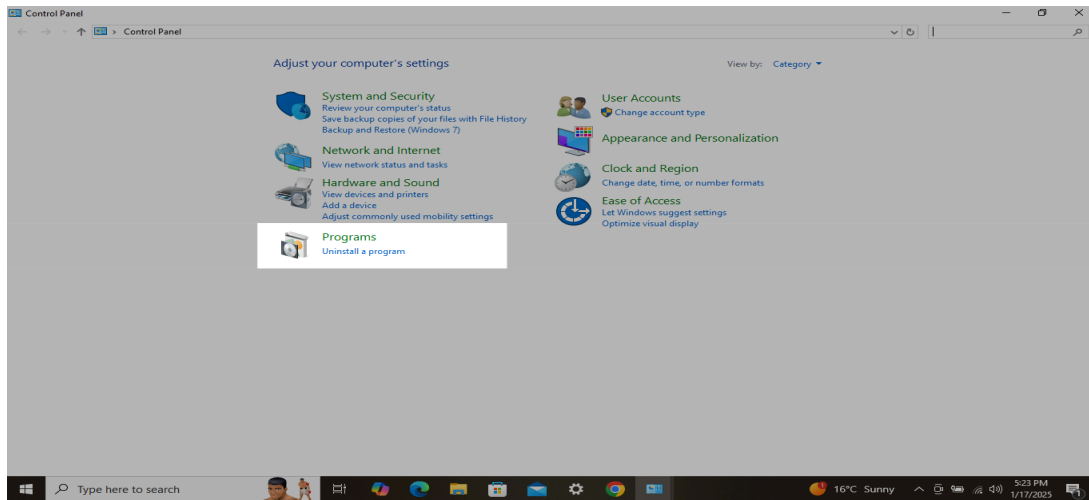
Steps to Check Safe Exam Browser Version

1. Go to the bottom left on the Windows search.
2. Search for the Control Panel.

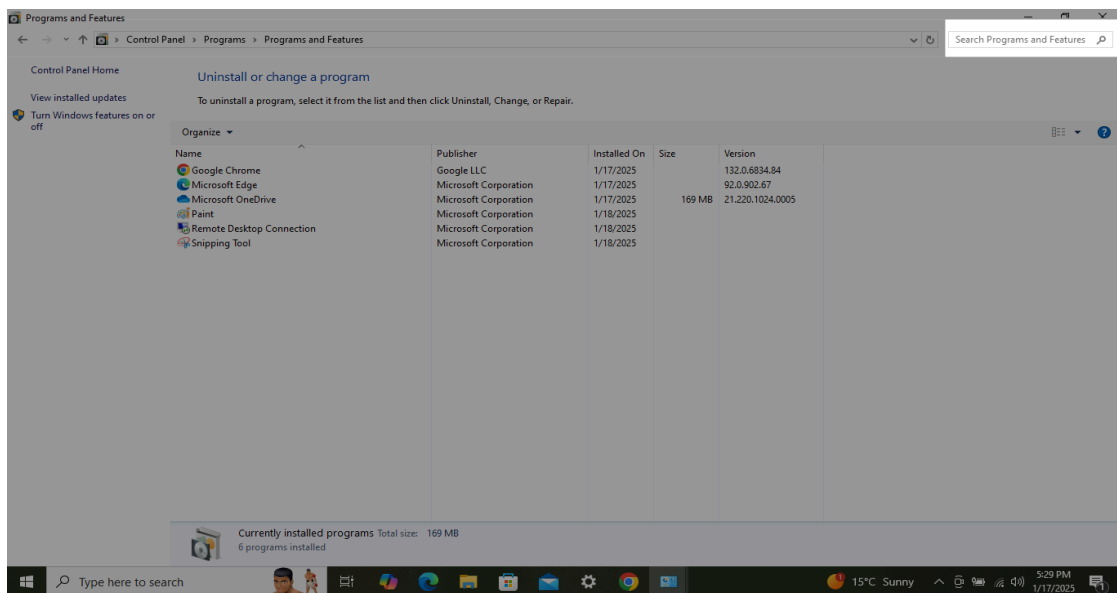


This user manual is proprietary and confidential, intended only for authorized users of Pod.ai. Unauthorized use, copying, or sharing is strictly prohibited. The manual must remain within designated systems and may not be shared externally. By accessing it, you agree to comply with all confidentiality terms. Violations may lead to disciplinary or legal action.

3. Open the Control Panel and click on "Uninstall a Program" under Programs.



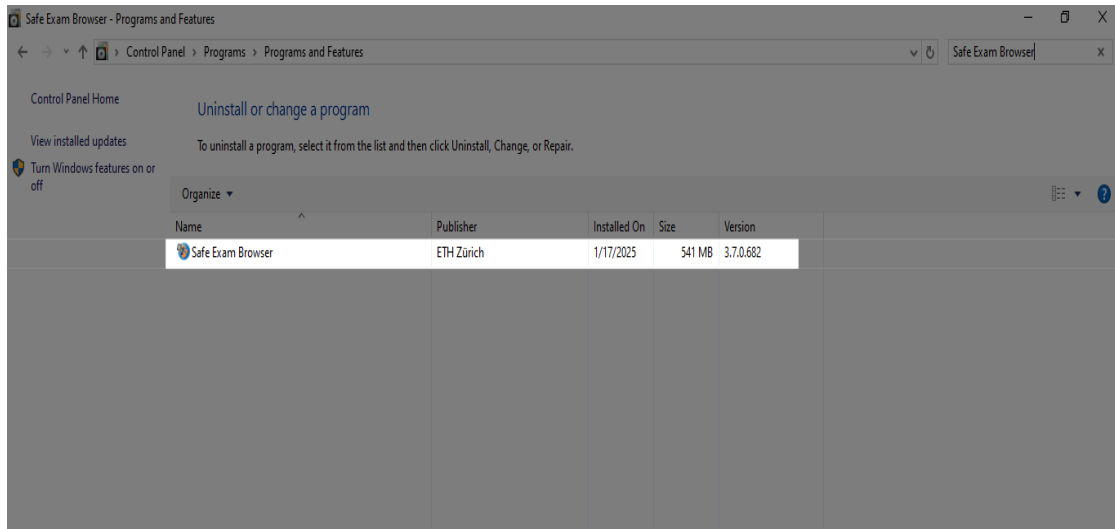
4. Go to the top right on Search Program and Features
5. Search for Safe Exam Browser in the list. If you don't have "Safe Exam Browser" in the list, you don't have it installed.



6. If you have it installed then check its version.

This user manual is proprietary and confidential, intended only for authorized users of Pod.ai.

Unauthorized use, copying, or sharing is strictly prohibited. The manual must remain within designated systems and may not be shared externally. By accessing it, you agree to comply with all confidentiality terms. Violations may lead to disciplinary or legal action.



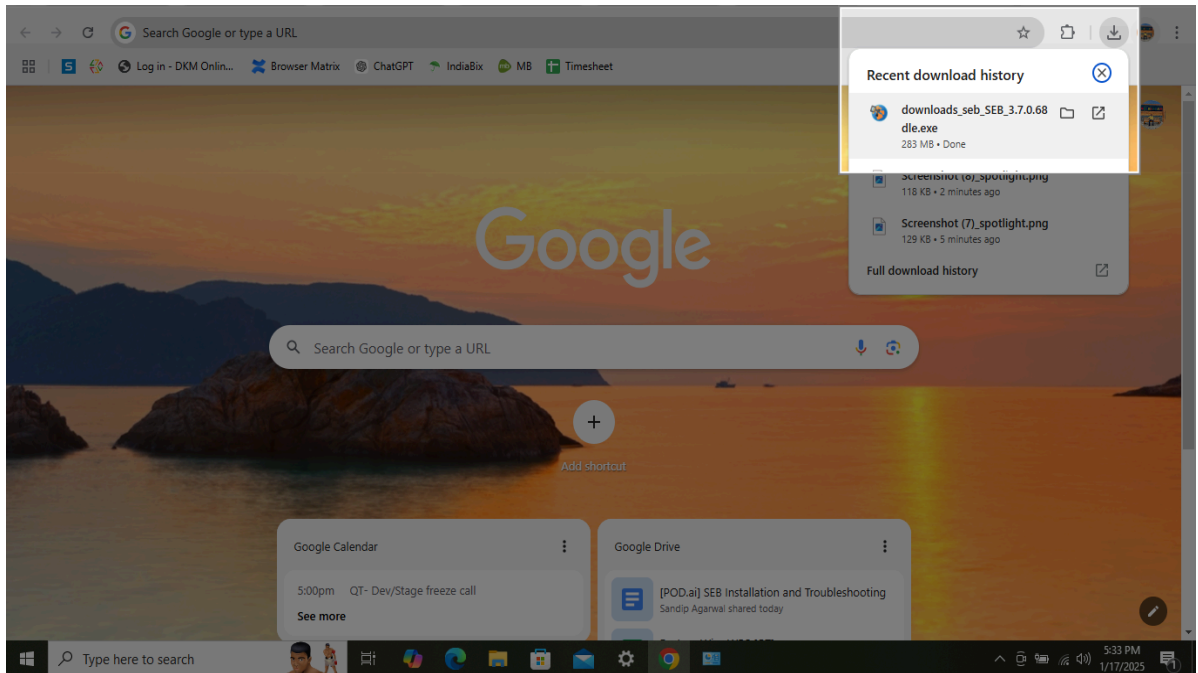
# Install SEB

## Steps to Install Safe Exam Browser

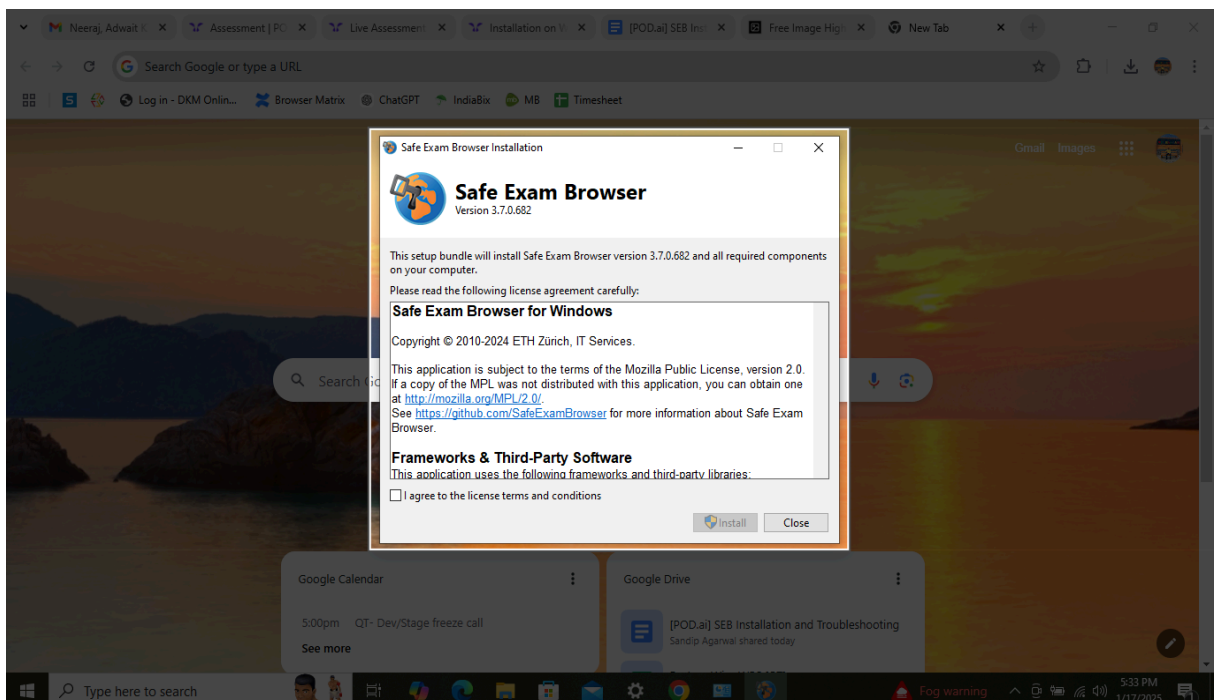
1. Check the version of Safe Exam Browser in your system. [See above for steps.](#)
  - a. If you don't have Safe Exam Browser installed, please continue to step 2 below.
  - b. If you have it, but the version differs from 3.8.0.761, [uninstall the current version](#), and then please continue to step 2 below.
  - c. If you already have it installed, its version is 3.8.0.761, you can skip the steps mentioned here.
2. Download the Safe Exam Browser Installer using the below button:

Download SEB For Windows
3. Launch Safe Exam Browser Installer by double-clicking on the downloaded file.

This user manual is proprietary and confidential, intended only for authorized users of Pod.ai. Unauthorized use, copying, or sharing is strictly prohibited. The manual must remain within designated systems and may not be shared externally. By accessing it, you agree to comply with all confidentiality terms. Violations may lead to disciplinary or legal action.



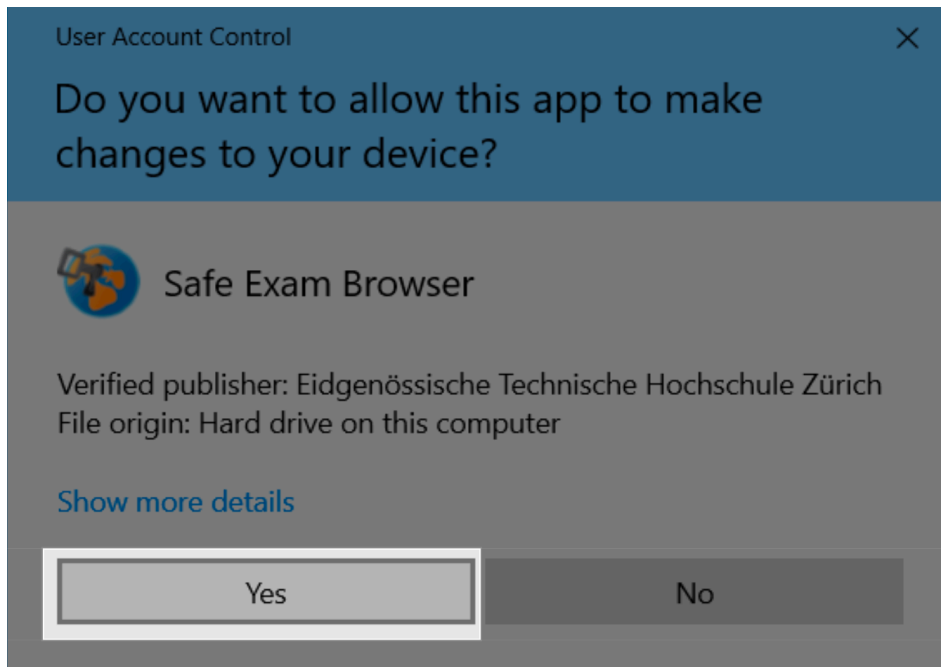
#### 4. Agree the T&C and follow the given steps in the Installer Wizard.



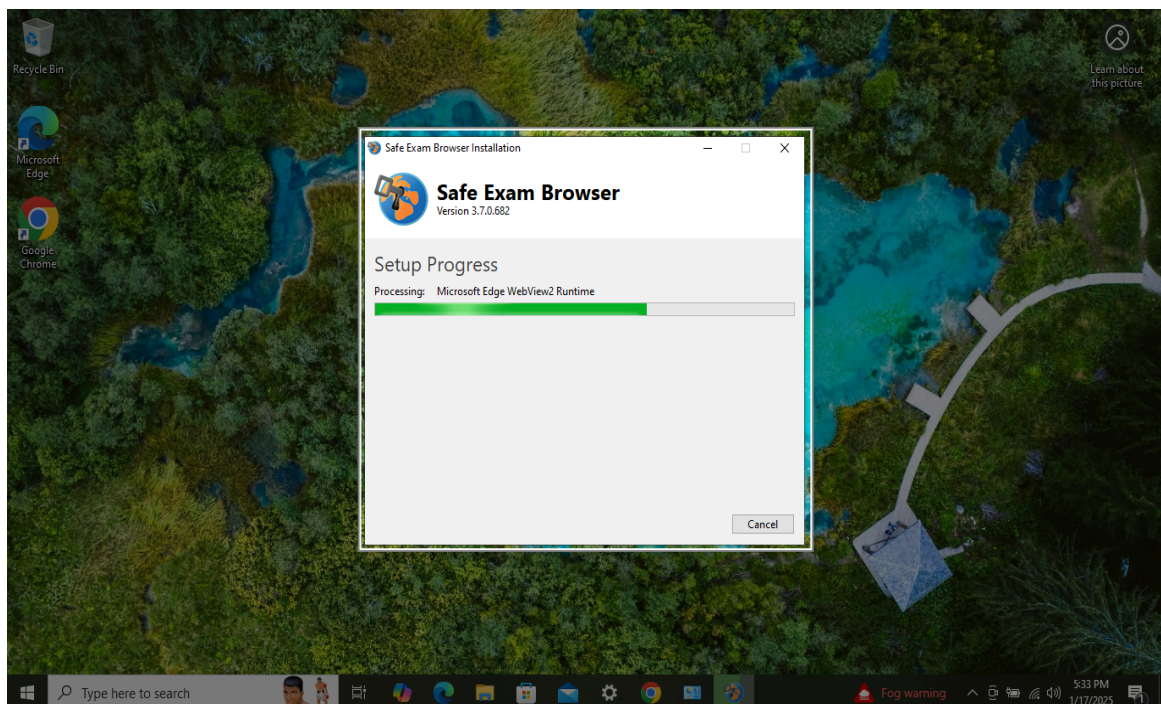
#### 5. Allow Installation on Device.

This user manual is proprietary and confidential, intended only for authorized users of Pod.ai. Unauthorized use, copying, or sharing is strictly prohibited. The manual must remain within designated systems and may not be shared externally. By accessing it, you agree to comply with all confidentiality terms. Violations may lead to disciplinary or legal action.





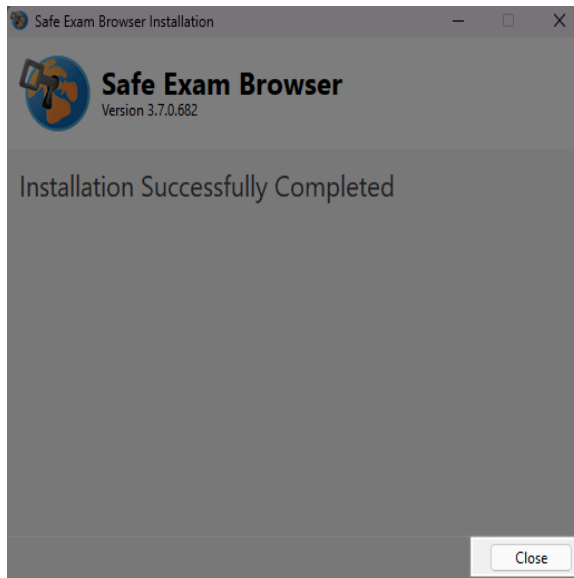
6. Wait for Installation to complete.



7. Close the Installation Wizard and restart the system if asked.

This user manual is proprietary and confidential, intended only for authorized users of Pod.ai.

Unauthorized use, copying, or sharing is strictly prohibited. The manual must remain within designated systems and may not be shared externally. By accessing it, you agree to comply with all confidentiality terms. Violations may lead to disciplinary or legal action.



8. Please check your email with the link to attempt the assessment. Before proceeding, ensure that you have a stable and strong internet connection.

This user manual is proprietary and confidential, intended only for authorized users of Pod.ai. Unauthorized use, copying, or sharing is strictly prohibited. The manual must remain within designated systems and may not be shared externally. By accessing it, you agree to comply with all confidentiality terms. Violations may lead to disciplinary or legal action.



# Supported Antiviruses

Only the following antivirus software is supported with default settings. For both supported and unsupported antiviruses, we recommend keeping antivirus and HTTPS network scanning features disabled during installation and while taking the exam.

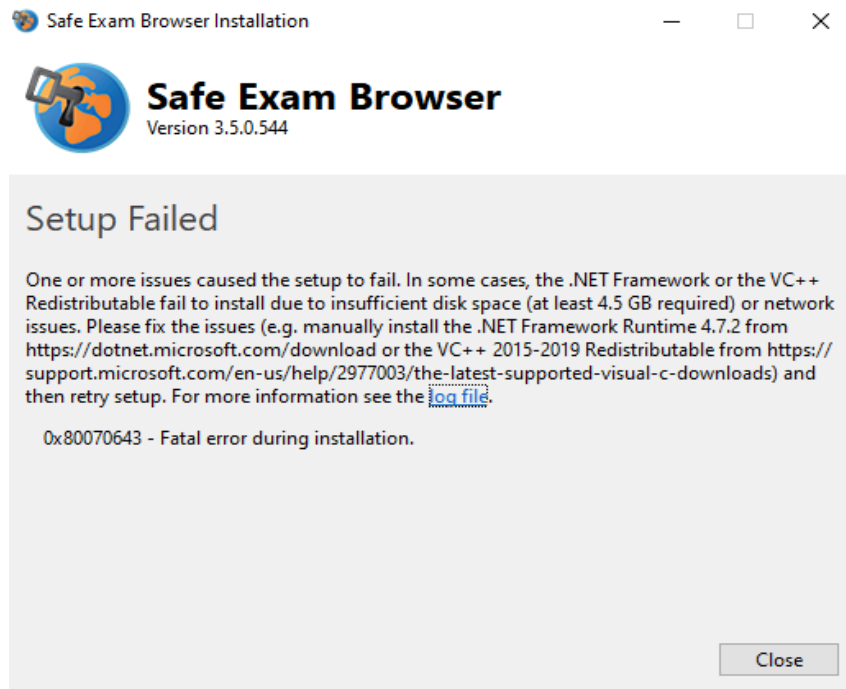
Avast Free Antivirus	19.2.2364
Avast Premier	19.2.2364
Avira Free Security Suite	15.0.43.24
Avira Prime	15.0.43.24
Bitdefender Antivirus Plus	23.0.16.72
Bitdefender Internet Security	23.0.16.72
Eset NOD32 Antivirus	12.0.31.0
Eset Smart Security Premium	12.0.31.0
G Data Antivirus	25.5.2.6
G Data Total Security	25.5.2.6
Kaspersky Free	19.0.0.1088(d)
McAfee Total Protection	16.0
Norton Security Deluxe	22.16.2.22
Norton Security Premium	22.16.2.22
Microsoft Defender	OS Build 17763.292
Sophos Enterprise Client	

This user manual is proprietary and confidential, intended only for authorized users of Pod.ai. Unauthorized use, copying, or sharing is strictly prohibited. The manual must remain within designated systems and may not be shared externally. By accessing it, you agree to comply with all confidentiality terms. Violations may lead to disciplinary or legal action.



# Troubleshooting

- Common issues encountered while Downloading or Installation of SEB
  - If you face any errors while downloading Safe Exam Browser or during the installation of the application then try changing your internet connection to a different network.
- Setup Failed message when shown during installation
  - If you face the "Setup Failed" error during installation of Safe Exam Browser, follow the below steps to resolve the issue:



- Steps to fix the above issue :
  - Close the SEB installation wizard.
  - Download and Install the .NET Runtime pack using the below link:  
<https://dotnet.microsoft.com/en-us/download/dotnet-framework/thank-you/net48-web-installer>

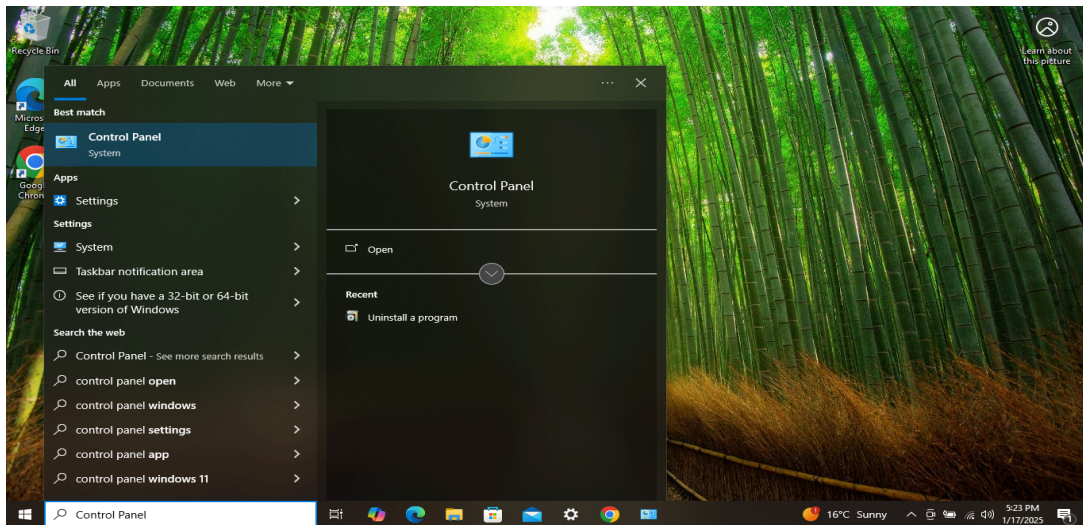


- Again Start installation from Step 1 given under “[Install SEB](#)”.
- Other Errors
  - For any other issues with SEB, you can refer to this document for resolutions: [Troubleshooting](#).

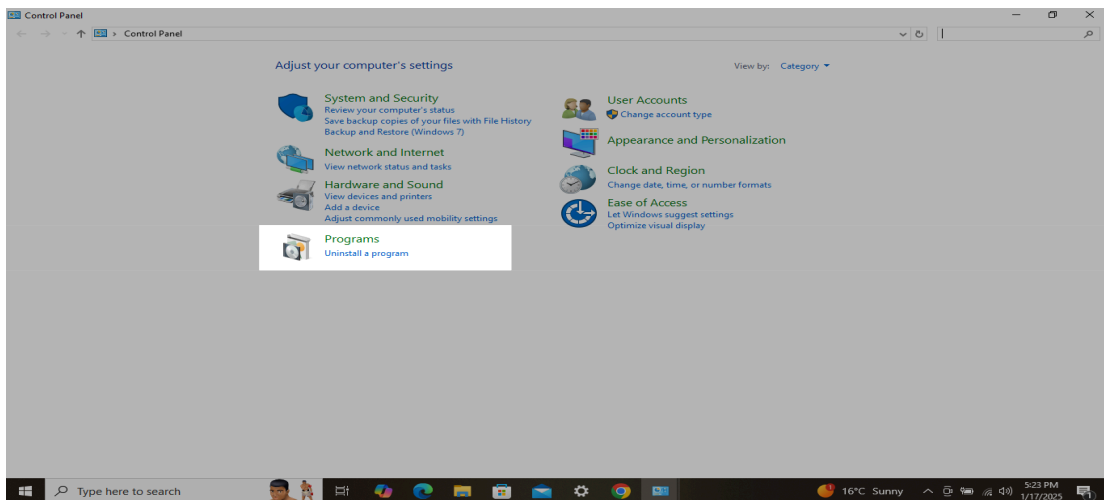
# Uninstall SEB

## Steps to Uninstall Safe Exam Browser

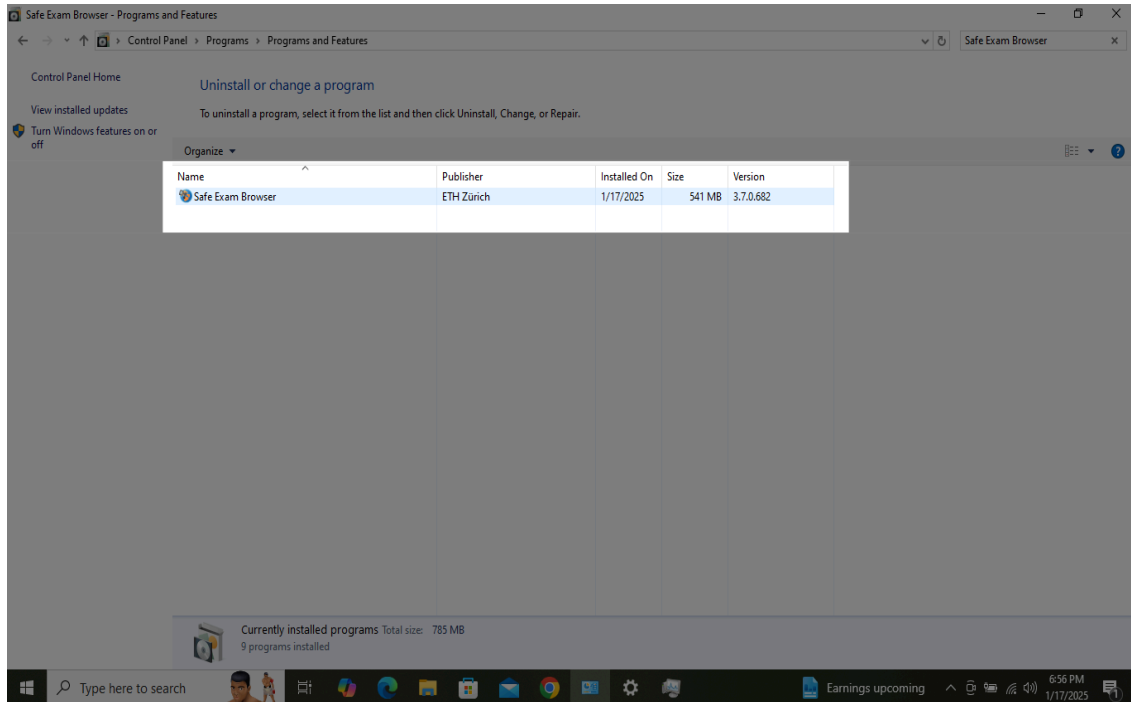
1. Go to the bottom left on the Windows search.
2. Search for Control Panel.



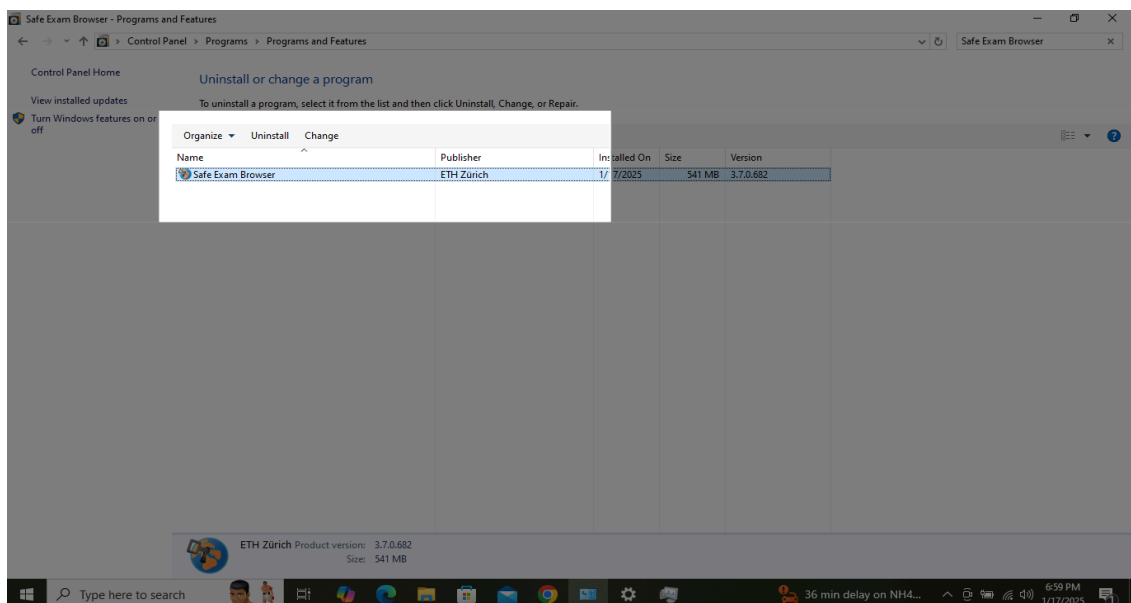
3. Open the Control Panel and click on "Uninstall a Program" under Programs.



4. Go to the top right on Search Program and Features.
5. Search for Safe Exam Browser in the list.



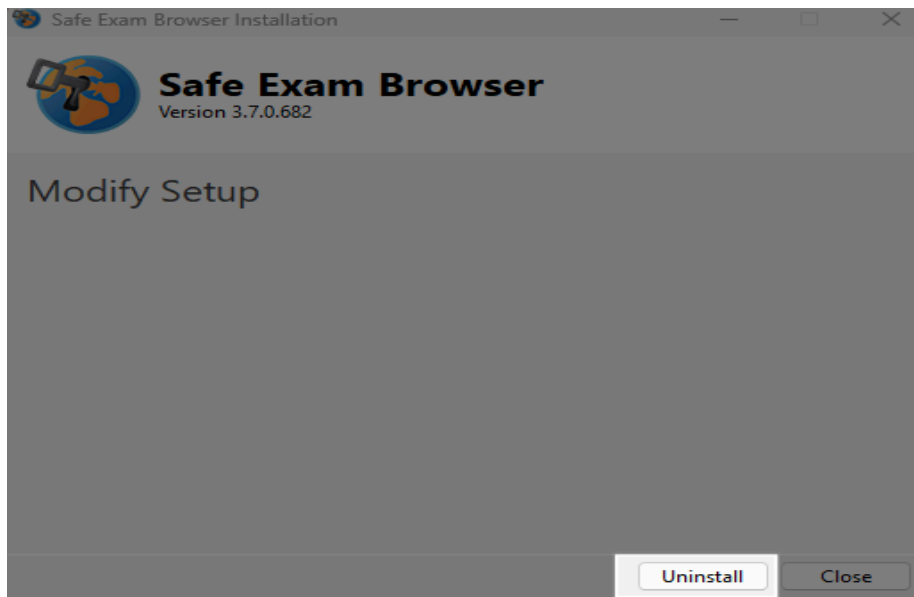
6. Double-click on Safe Exam Browser or Select Safe Exam Browser and Click on the Uninstall button.



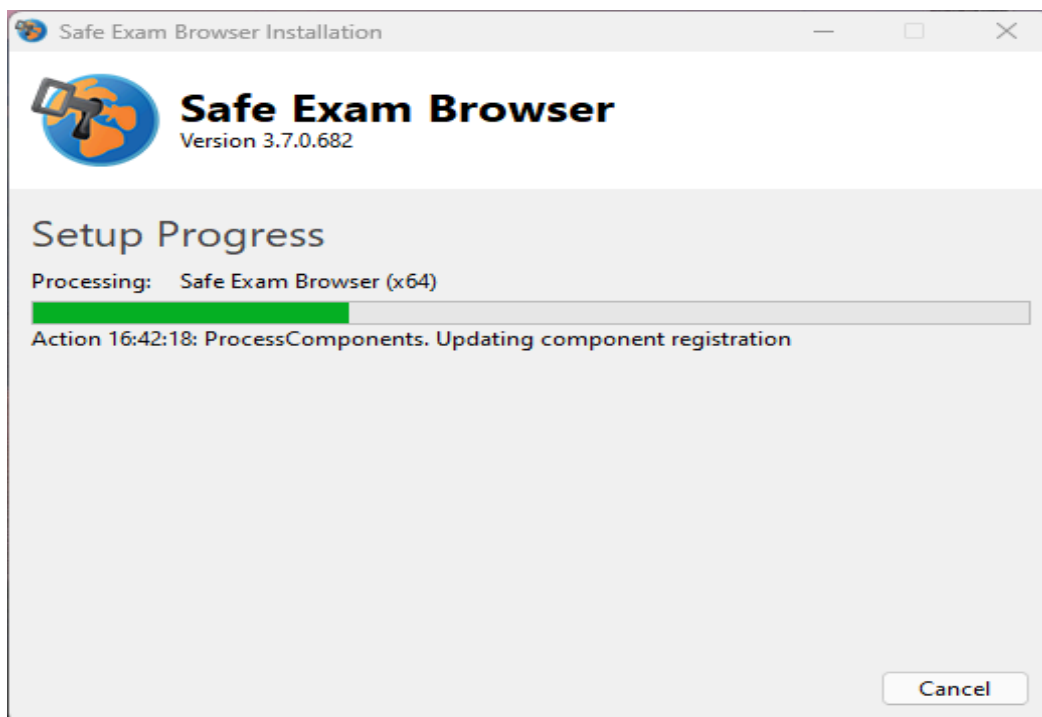
This user manual is proprietary and confidential, intended only for authorized users of Pod.ai. Unauthorized use, copying, or sharing is strictly prohibited. The manual must remain within designated systems and may not be shared externally. By accessing it, you agree to comply with all confidentiality terms. Violations may lead to disciplinary or legal action.



7. Click Uninstall on the uninstall wizard.



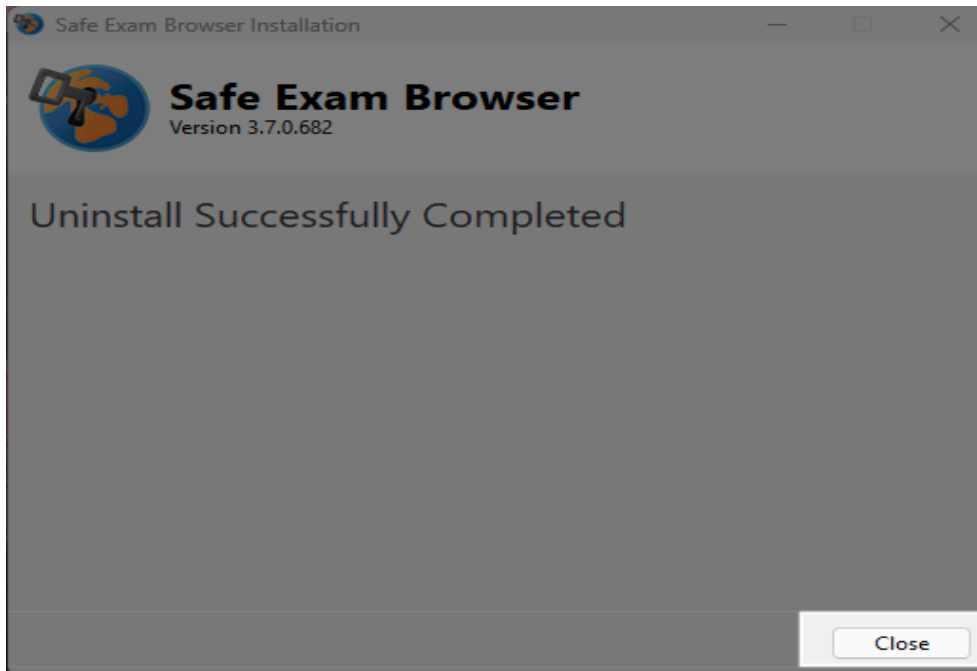
8. Wait on the Setup Progress screen.



This user manual is proprietary and confidential, intended only for authorized users of Pod.ai. Unauthorized use, copying, or sharing is strictly prohibited. The manual must remain within designated systems and may not be shared externally. By accessing it, you agree to comply with all confidentiality terms. Violations may lead to disciplinary or legal action.



9. Click on the "Close" button after successful uninstallation.



This user manual is proprietary and confidential, intended only for authorized users of Pod.ai. Unauthorized use, copying, or sharing is strictly prohibited. The manual must remain within designated systems and may not be shared externally. By accessing it, you agree to comply with all confidentiality terms. Violations may lead to disciplinary or legal action.